

## FIBERLIGN<sup>®</sup> LITE SUPPORT

The **FIBERLIGN Lite Support (FLS)** system is designed to gently but firmly support ADSS cable at tangent locations. It is designed for shorter spans up to 300 feet. The dual insert design supports multiple ADSS cables and features stacking capabilities to future-proof installations and cut down on the number of pole attachments.

### FEATURES AND BENEFITS

- Can be used with standard round-profile ADSS cables and flat drop ADSS cables
- Dual inserts can support two standard ADSS cables; multiple ADSS drop cables; or one standard ADSS cable and multiple ADSS flat drop cables
- Housings can be stacked to add more cables within the same pole space
- Mounts to a pole with a 5/8" through bolt or with 3/4" wide high-strength banding
- Supports span lengths up to 300 ft (91 m) NESC Heavy
- Supports line angles up to 20 degrees for most applications
- Housing halves are made from a high-strength, dielectric material
- Inserts are made from a soft, pliable dielectric material that gently grips and cushions the cable within the housing
- Highly abrasive-resistant surface of the housing allows it to be used as a stringing traveler at the structure

## SPECIFICATIONS

The support performance depends upon the specific cable outer diameter, initial cable tension, NESC loading condition, and other factors. The **FIBERLIGN® Lite Support** is designed for a cable system with light tensions and short spans.

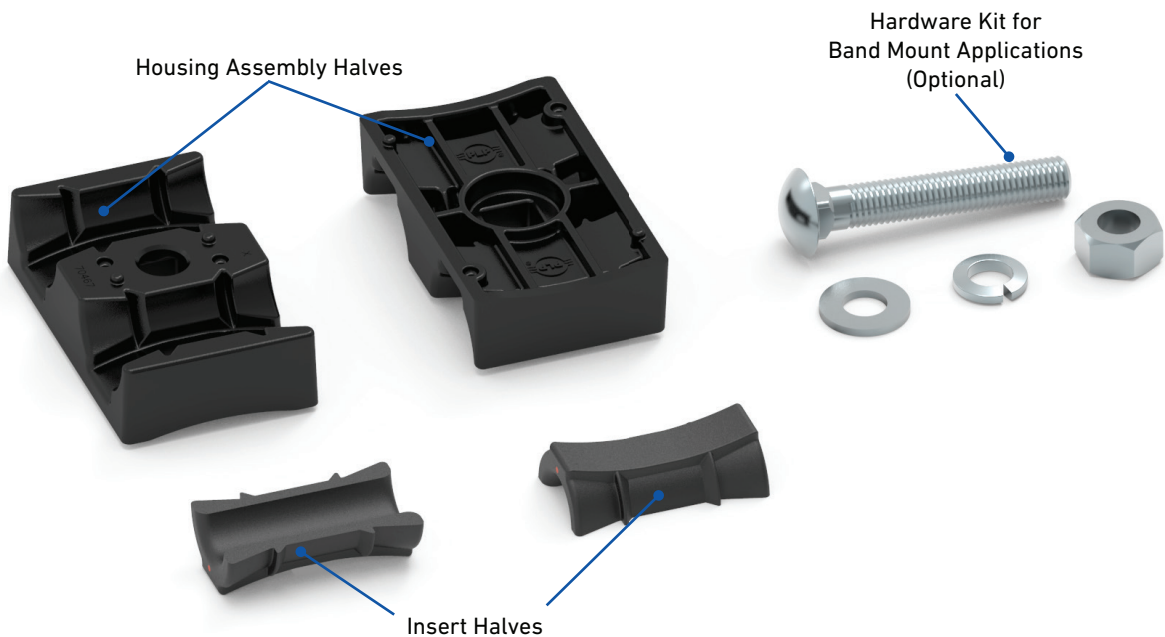
### FIBERLIGN Lite Support

| Cable System Requirements        |    |  |   |
|----------------------------------|----|--|---|
| Maximum Span Length <sup>1</sup> |    | Maximum Line Angle for Stringing Operations <sup>2</sup> | Maximum Line Angle for Permanent Installations <sup>2</sup> |
| ft                               | m  | degrees  |   |
| 300                              | 91 | 10   | 20  |

<sup>1</sup>NESC Heavy

<sup>2</sup>Consult PLP for exceptions

## COMPONENTS

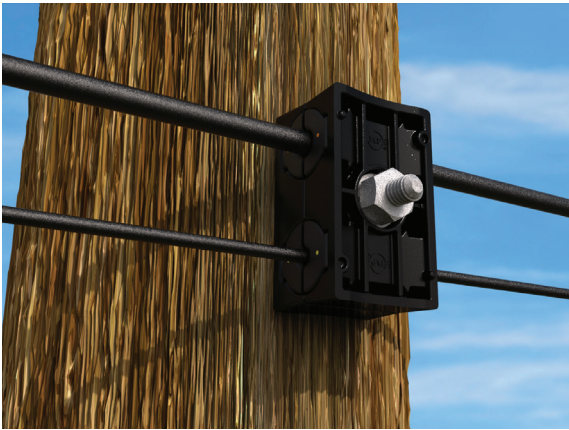


| Component   | Description   |
|---|---|
| Housing Assembly Halves                             | With the top insert removed, the housing can be used for stringing in cable and is capable of handling up to a 1-1/4" (32 mm) diameter mechanical swivel with pulling in grip. Housing halves have a molded center hole to accept a standard 5/8" through bolt. |
| Insert Halves                                       | Slotted to accept cables with diameters up to 1.054" (26.8 mm), as well as flat drop cables. Designed to cushion the cable under loads; hourglass shape creates a wedge-action grip when unbalanced loads exist. Color-coded for ease of identification.        |
| Hardware Kit for Band Mount Applications (Optional) | Used to clamp the housing assembly halves together after the assembly has been banded to the structure.   |

## MOUNTING OPTIONS

### Bolt Mount

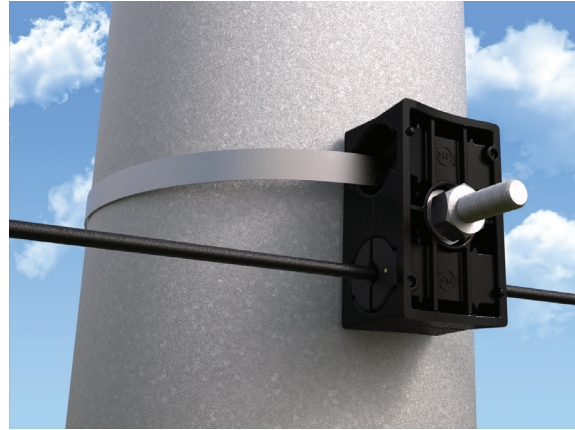
- Attached with a 5/8"-11 double-arming bolt
- Leave 4" to 5" (102 mm to 127 mm) of the bolt exposed to accept the support



Lite Support Bolted to Pole

### Band Mount

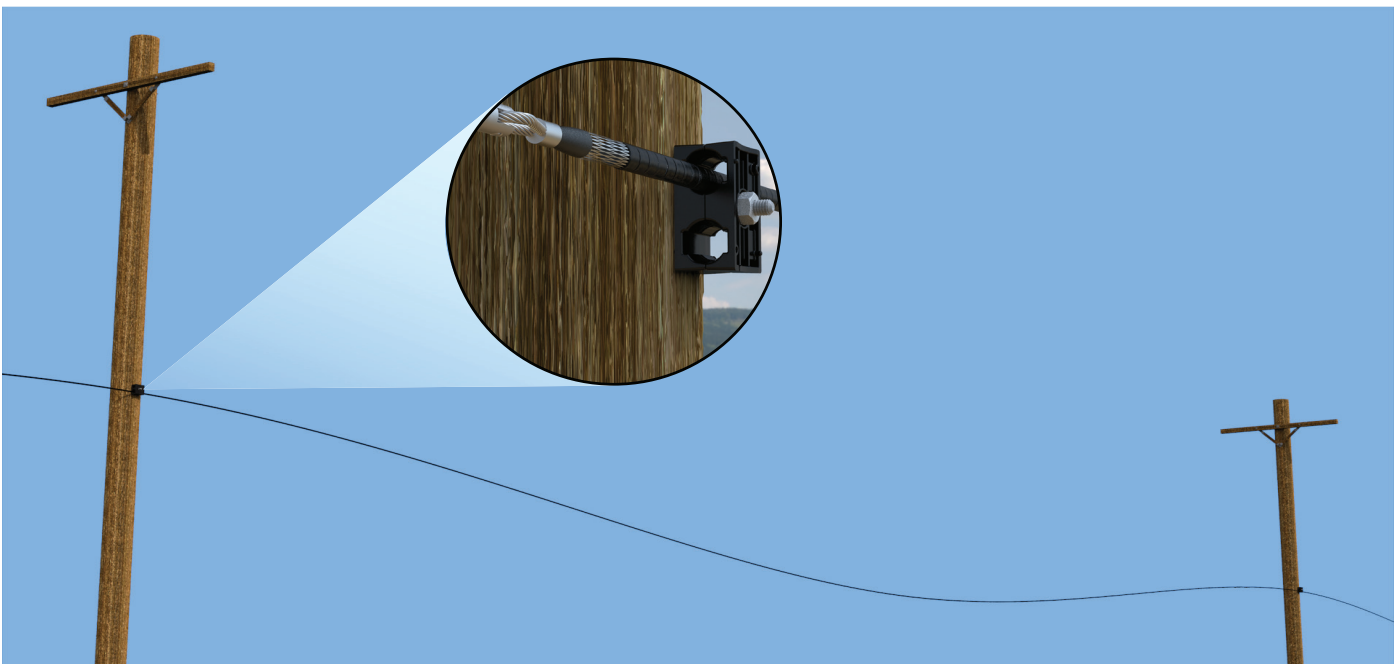
- 3/4" wide steel banding can be inserted into the molded groove to attach the support to a structure
- Banding not included



Lite Support Banded to Pole

## STRINGING OPERATIONS

- Housing assembly allows up to 10 degree line angles
- Molded cavity will accept up to 1-1/4" diameter mechanical swivel with pulling-in grip
- Eliminates the need for conventional stringing travelers

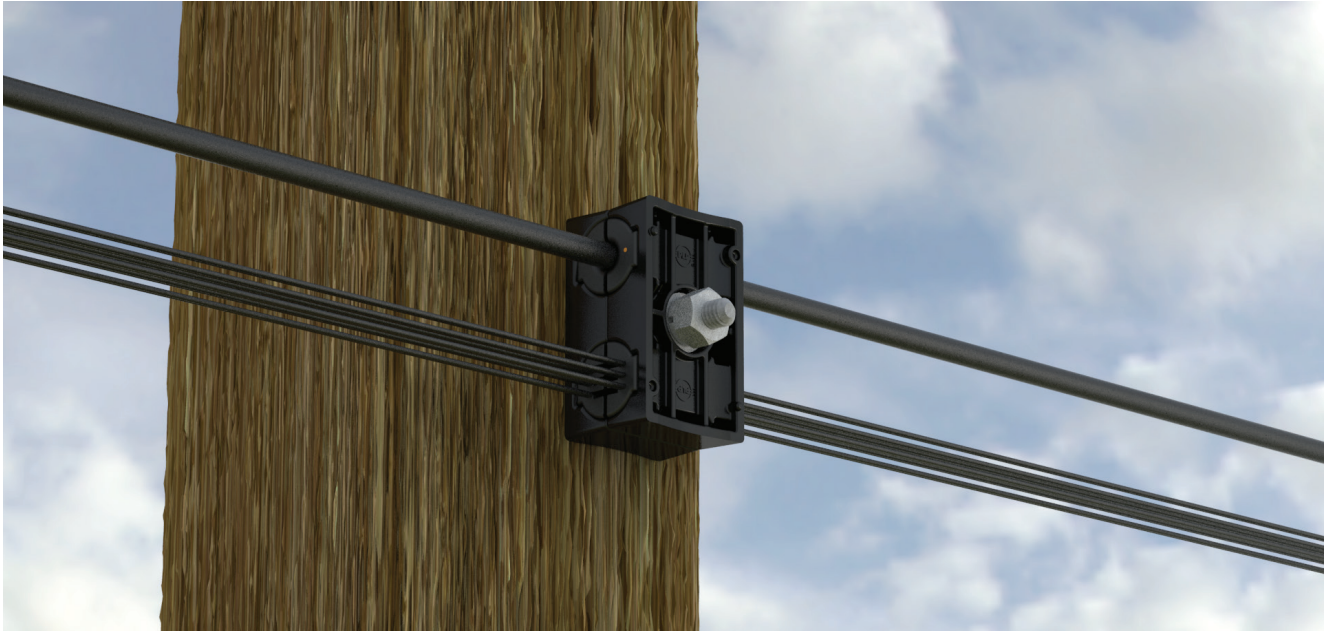


Stringing in Cable with FIBERLIGN Lite Supports

## SPACE SAVING OPTIONS

### Dual Inserts

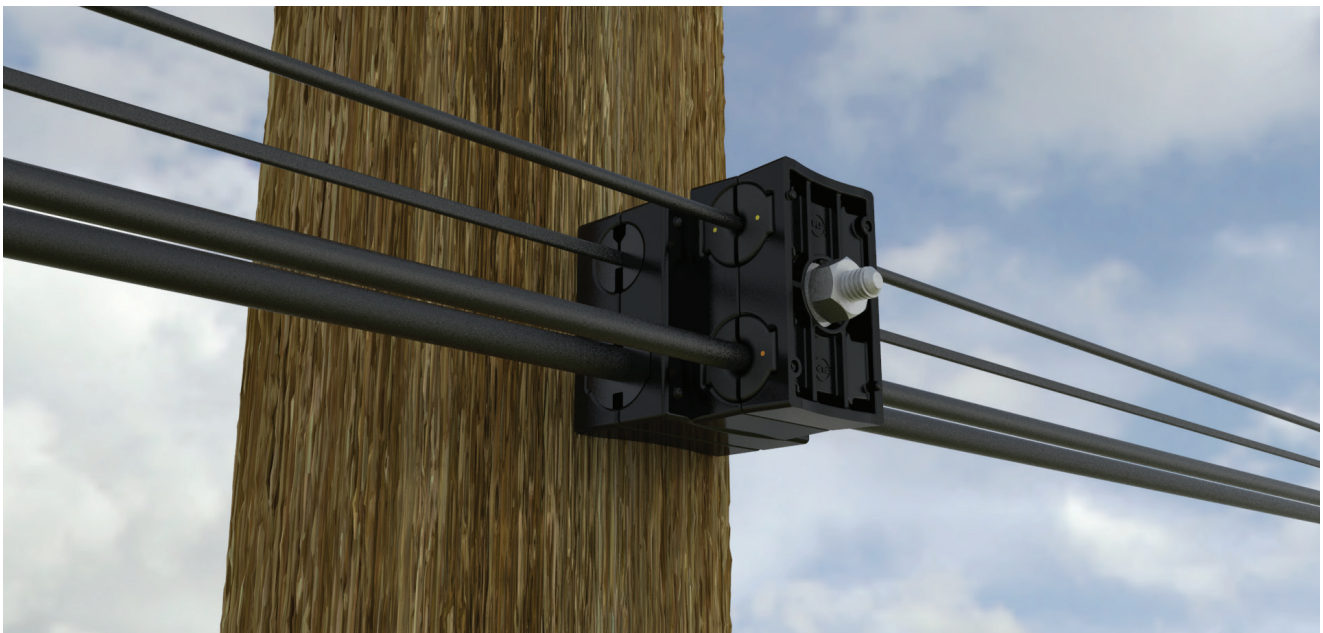
- Kits include one insert set unless otherwise specified
- Additional inserts can be ordered separately



FIBERLIGN Lite Support with Dual Inserts

### Stacking

- Allows for greater density at a single attachment location
- Adjust length of exposed bolt to stack multiple housings
- Molded-in features prevent the stacked houses from rotating



FIBERLIGN Lite Support stacked with the Legacy FIBERLIGN Lite Support



## ORDERING INFORMATION

Select the appropriate FIBERLIGN® Lite Support based on the cable diameter. If the cable you are using does not fall within any of the published ranges, please contact PLP for further assistance.

- Each Lite Support includes one insert set
- Additional inserts can be ordered, if necessary – see next page
- Each insert part number includes one set of inserts

### FLS Assemblies (Round-Profile Drop Cables)

| Catalog Number            |                                   | Cable Diameter Range |             | Color Code |
|---------------------------|-----------------------------------|----------------------|-------------|------------|
| Support (includes insert) | Support with Banding Hardware Kit | in                   | mm          |            |
| 4800301                   | 4800301H2                         | 0.226 – 0.275        | 5.7 – 6.9   | Red        |
| 4800302                   | 4800302H2                         | 0.276 – 0.325        | 7.0 – 8.2   | Yellow     |
| 4800303                   | 4800303H2                         | 0.326 – 0.375        | 8.3 – 9.5   | Pink       |
| 4800304                   | 4800304H2                         | 0.376 – 0.425        | 9.6 – 10.7  | Gray       |
| 4800305                   | 4800305H2                         | 0.426 – 0.475        | 10.8 – 12.0 | Black      |
| 4800306                   | 4800306H2                         | 0.476 – 0.525        | 12.1 – 13.3 | Blue       |
| 4800307                   | 4800307H2                         | 0.526 – 0.575        | 13.4 – 14.6 | Orange     |
| 4800308                   | 4800308H2                         | 0.576 – 0.625        | 14.6 – 15.8 | Brown      |
| 4800309                   | 4800309H2                         | 0.626 – 0.675        | 15.9 – 17.1 | Green      |
| 4800310                   | 4800310H2                         | 0.676 – 0.750        | 17.2 – 19.0 | White      |
| 4800311                   | 4800311H2                         | 0.751 – 0.825        | 19.1 – 20.9 | Red        |
| 4800312                   | 4800312H2                         | 0.826 – 0.900        | 21.0 – 22.8 | Yellow     |
| 4800313                   | 4800313H2                         | 0.901 – 0.975        | 22.9 – 24.7 | Pink       |
| 4800314                   | 4800314H2                         | 0.976 – 1.050        | 24.8 – 26.6 | Gray       |
| 4800300                   | Housing Only                      |                      |             |            |
| 4800500                   | Banding Hardware                  |                      |             |            |

Custom Dual Inserts, including a combination of one small insert size and one large insert size, can be created. Contact PLP for further details.

### Multi-Drop Cushion Assembly

| Catalog Number            |                                   | Cable Type* | Flat Drop Dimensions |           | Number of Cables |
|---------------------------|-----------------------------------|-------------|----------------------|-----------|------------------|
| Support (includes insert) | Support with Banding Hardware Kit |             | L x W <sup>1</sup>   |           |                  |
|                           |                                   |             | in                   | mm        |                  |
| 4800350                   | 4800350H2                         | Flat Drop   | .32 x .17            | 8.1 x 4.3 | 6                |
|                           |                                   | ROC™ Drop   | .21 x .12            | 5.4 x 3   |                  |

\*Can support either Flat Drop or ROC™ Drop Cable, but not both.

## ORDERING INFORMATION

Select the appropriate FIBERLIGN® Lite Support Insert Set based on the cable diameter. If the cable you are using does not fall within any of the published ranges, please contact PLP for further assistance.

- Each catalog number includes two insert halves to make one set
- Each Lite Support includes one set of inserts
- If utilizing both cavities, order additional inserts using the tables below
- Each insert part number includes one set of inserts

### Insert Set

| Catalog Number | Cable Diameter Range |             | Color Code |
|----------------|----------------------|-------------|------------|
|                | in                   | mm          |            |
| 00070468       | 0.226 – 0.275        | 5.7 – 6.9   | Red        |
| 00070469       | 0.276 – 0.325        | 7.0 – 8.2   | Yellow     |
| 00070470       | 0.326 – 0.375        | 8.3 – 9.5   | Pink       |
| 00070471       | 0.376 – 0.425        | 9.6 – 10.7  | Gray       |
| 00070472       | 0.426 – 0.475        | 10.8 – 12.0 | Black      |
| 00070473       | 0.476 – 0.525        | 12.1 – 13.3 | Blue       |
| 00070474       | 0.526 – 0.575        | 13.4 – 14.6 | Orange     |
| 00070475       | 0.576 – 0.625        | 14.6 – 15.8 | Brown      |
| 00070476       | 0.626 – 0.675        | 15.9 – 17.1 | Green      |
| 00070477       | 0.676 – 0.750        | 17.2 – 19.0 | White      |
| 00070478       | 0.751 – 0.825        | 19.1 – 20.9 | Red        |
| 00070479       | 0.826 – 0.900        | 21.0 – 22.8 | Yellow     |
| 00070480       | 0.901 – 0.975        | 22.9 – 24.7 | Pink       |
| 00070481       | 0.976 – 1.050        | 24.8 – 26.6 | Gray       |



Insert Set

### Multi-Drop Cushion Insert Set

| Catalog Number | Cable Type* | Flat Drop Dimensions |           | Number of Cables |
|----------------|-------------|----------------------|-----------|------------------|
|                |             | L x W <sup>1</sup>   |           |                  |
|                |             | in                   | mm        |                  |
| 00070492       | Flat Drop   | .32 x .17            | 8.1 x 4.3 | 6                |
|                | ROCTM Drop  | .21 x .12            | 5.4 x 3   |                  |

\*Can support either Flat Drop or ROCTM Drop Cable, but not both.

